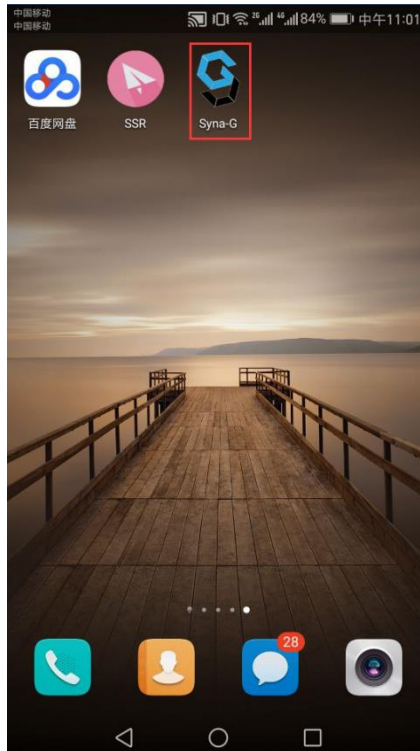
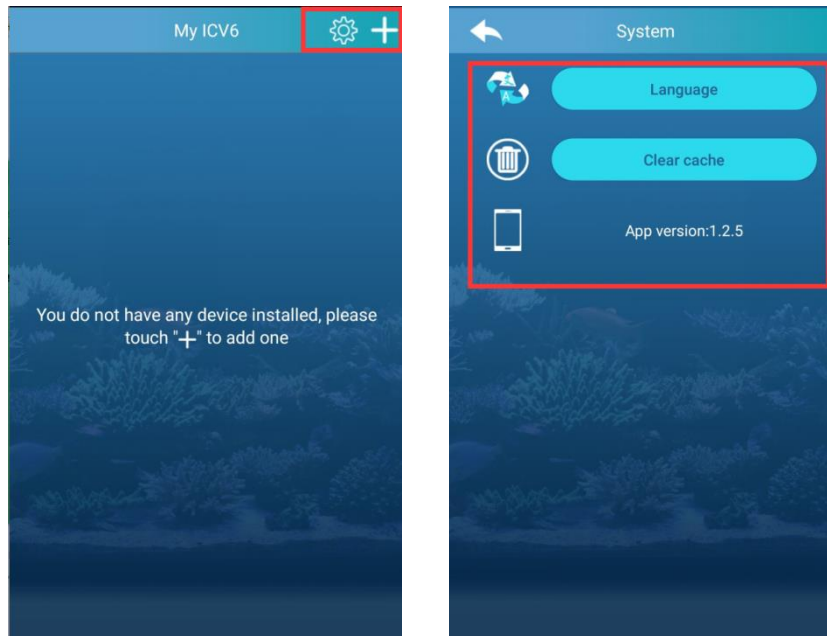


# Control Manual for Gyre

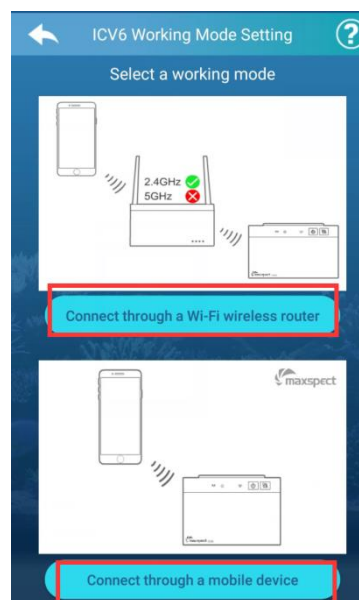
1. Download the **newest** version of Syna-G, turn on the ICV6 and Gyre Controller (with **Firmware 2.0** or above).



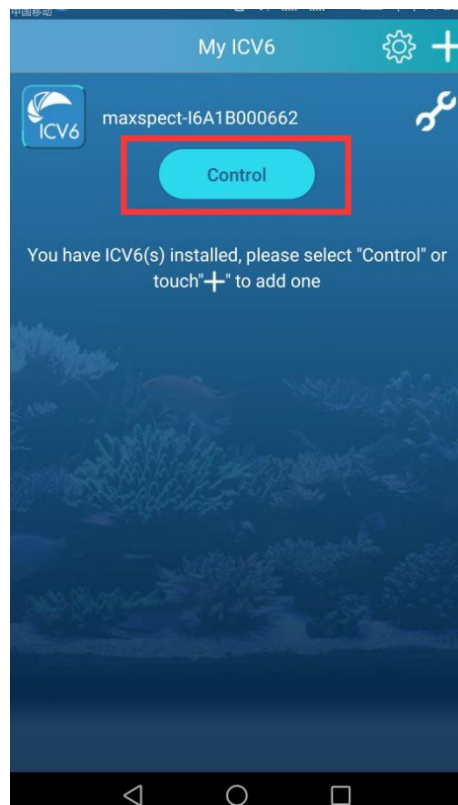
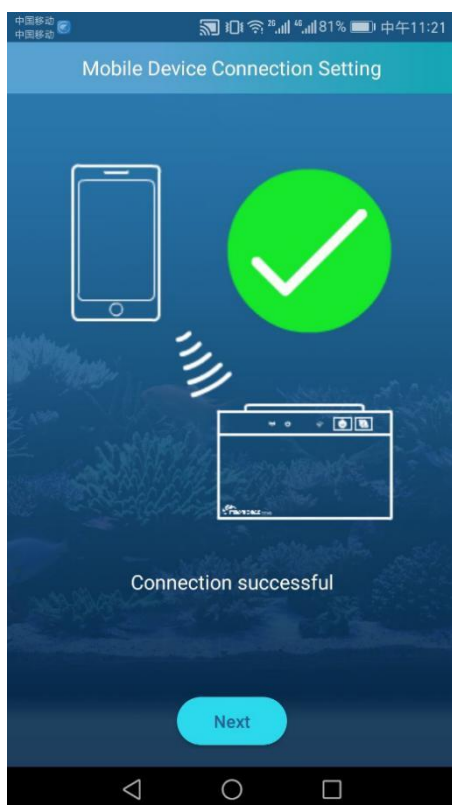
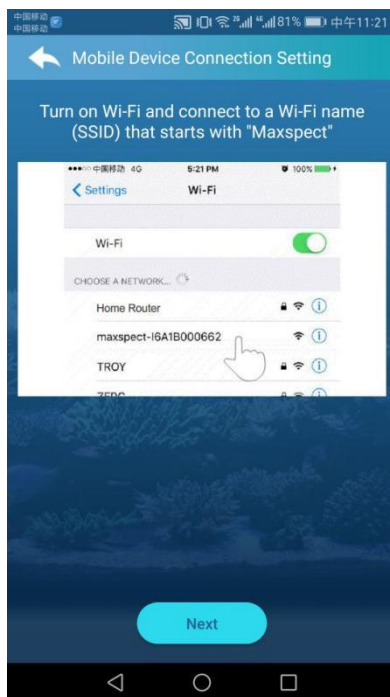
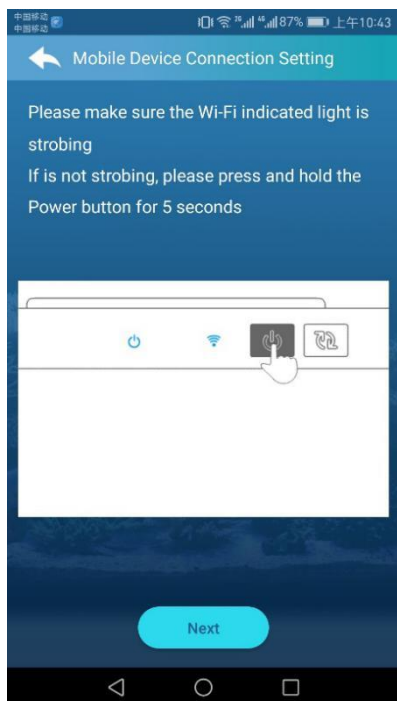
2. Open Syna-G, there are two marks on top, first is the “Gear”, which is the system setting function, and the “Plus”, which is to add a new ICV6. Click “Gear”, you could select the language, clear cache, and check the APP Version.



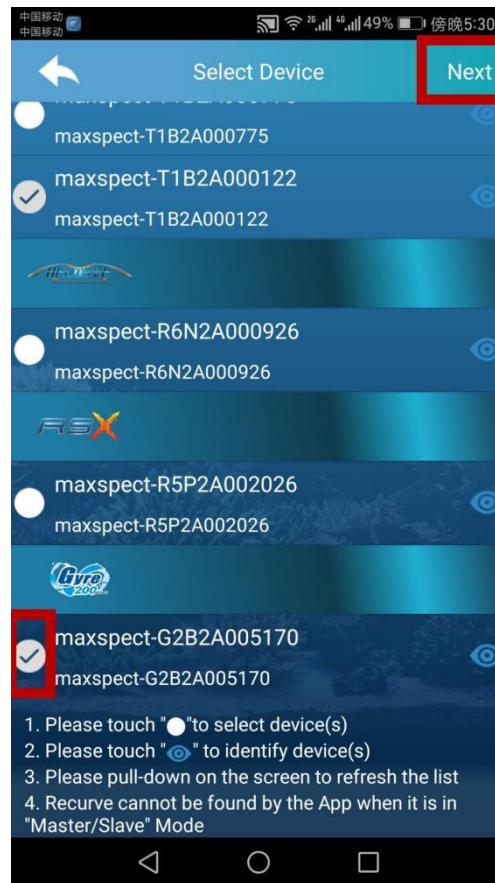
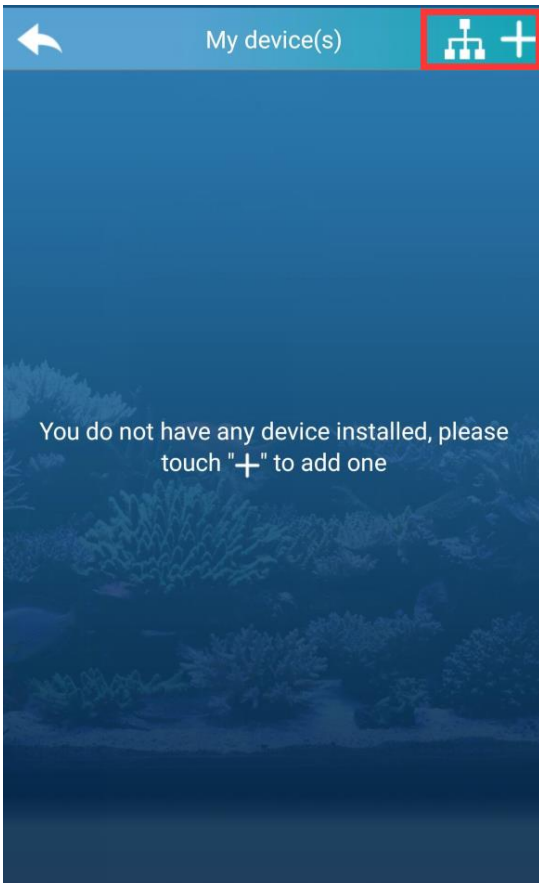
3. Click “Plus”, you could start adding an ICV6. There are two modes of connecting an ICV6, as listed below: 1) To connect it through a Wifi Router; 2) To connect it directly.



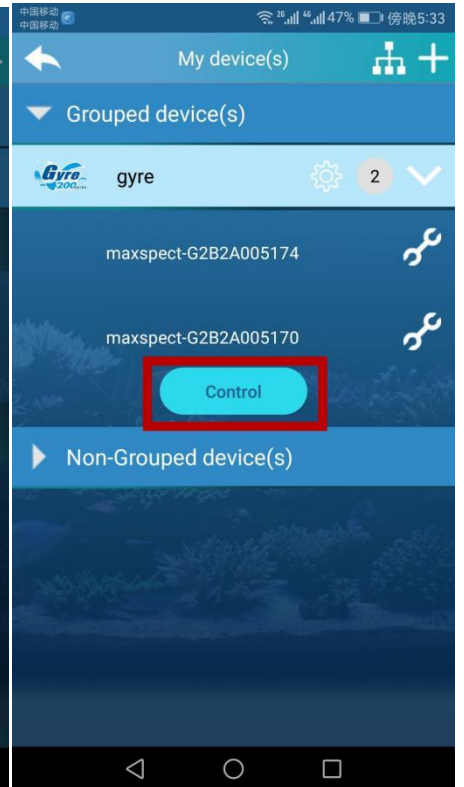
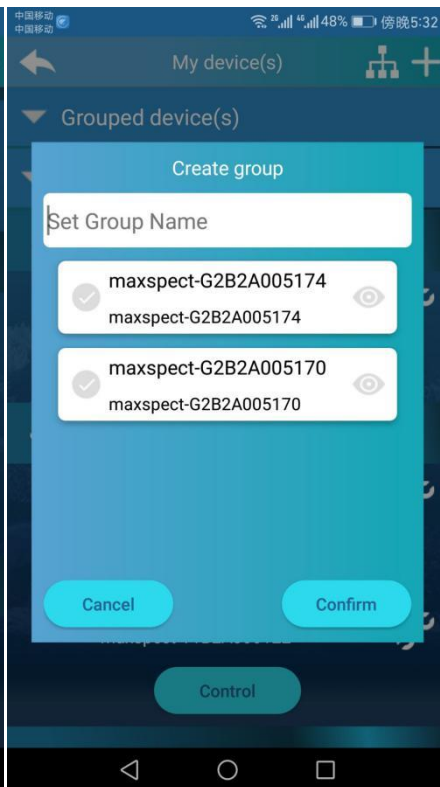
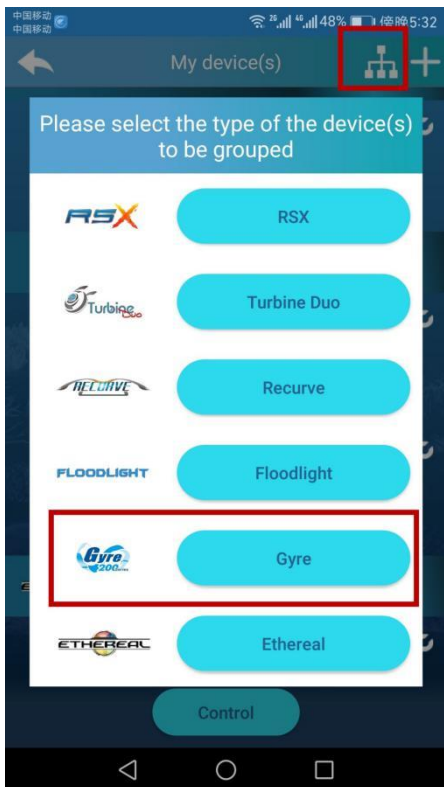
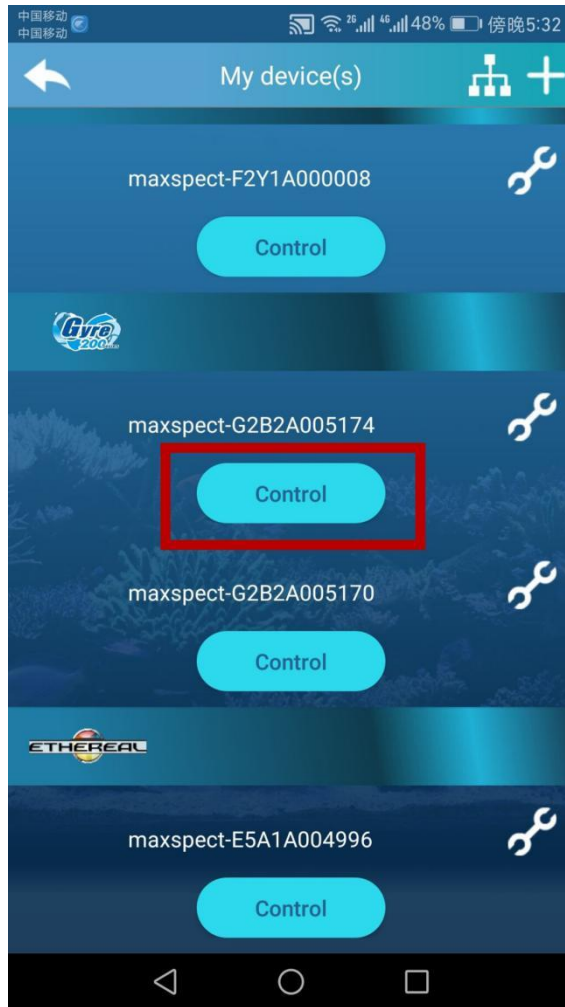
4. Select the working mode, and follow the instructions on apps to add an ICV6. In this case we screen shot on how to “Connect the ICV6 through a mobile device”



5. The ICV6 is successfully to be added on the APP. Now it is OK to control the ICV6 now. The “wrench” on the right of ICV6 allows you to delete and edit the setting of an ICV6.
  
6. Click “Control” Button, you could start adding the devices now. Please click the “Plus” Button to add the lights. In this case, we need to add the Gyres. Tick the Gyres you want to control and click “Next” to add on the Apps.



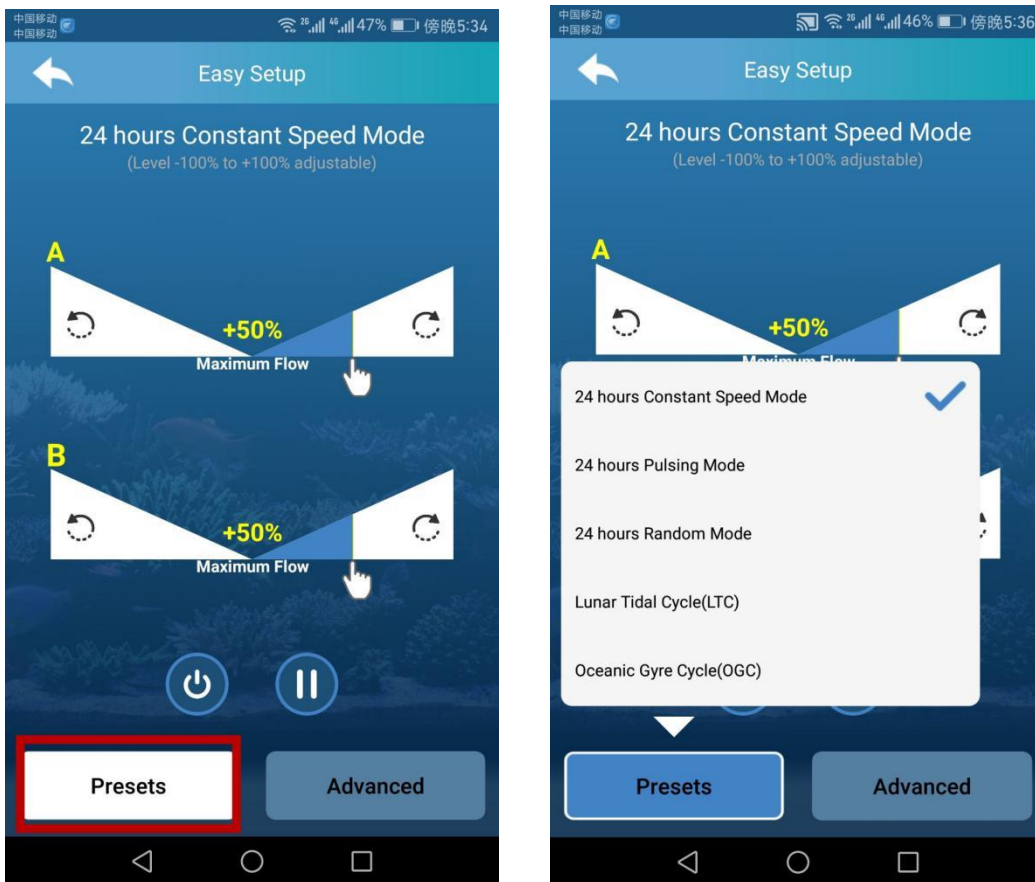
7. After the Gyres are added on the Apps, you could either click the “Control” Button to control a single Gyre or click the “Group” button like the below picture, to group some Gyres and control the whole group.



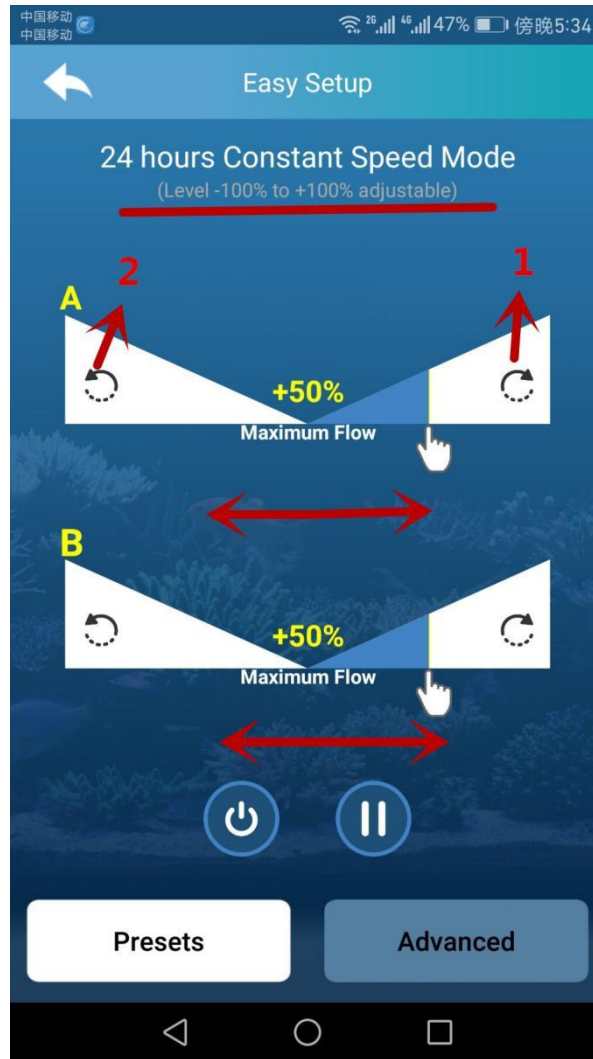


8. On the control page of Gyre, there are two functions(Easy Setup and Advance Function), right now only the Easy Setup Function is available, while the Advance Function is still under development.

On Easy Setup Page, there is a Preset List for you to choose one of presets.

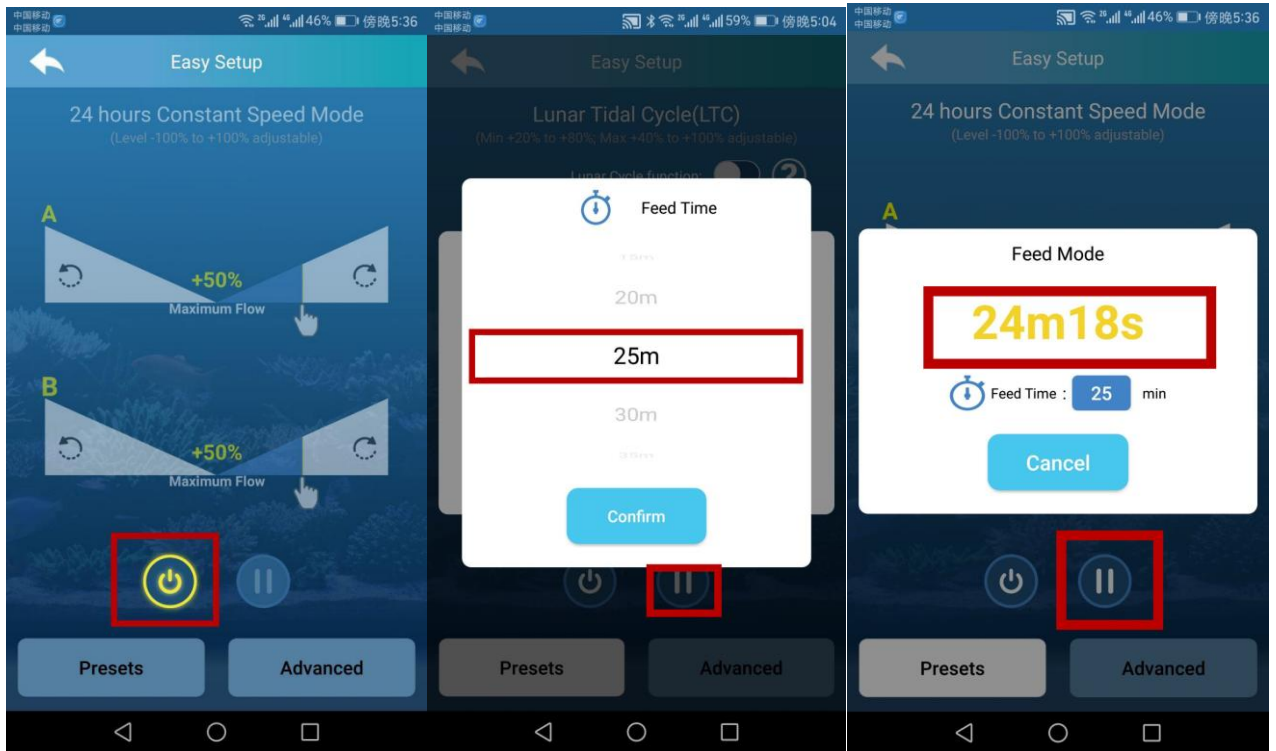


9. For different presets, the adjustable range for the parameter is different, which is also written on the headline. The rotating direction is also marked on the page, as shown in below picture, (1) is Forward Rotating; (2) is Reversal Rotating.

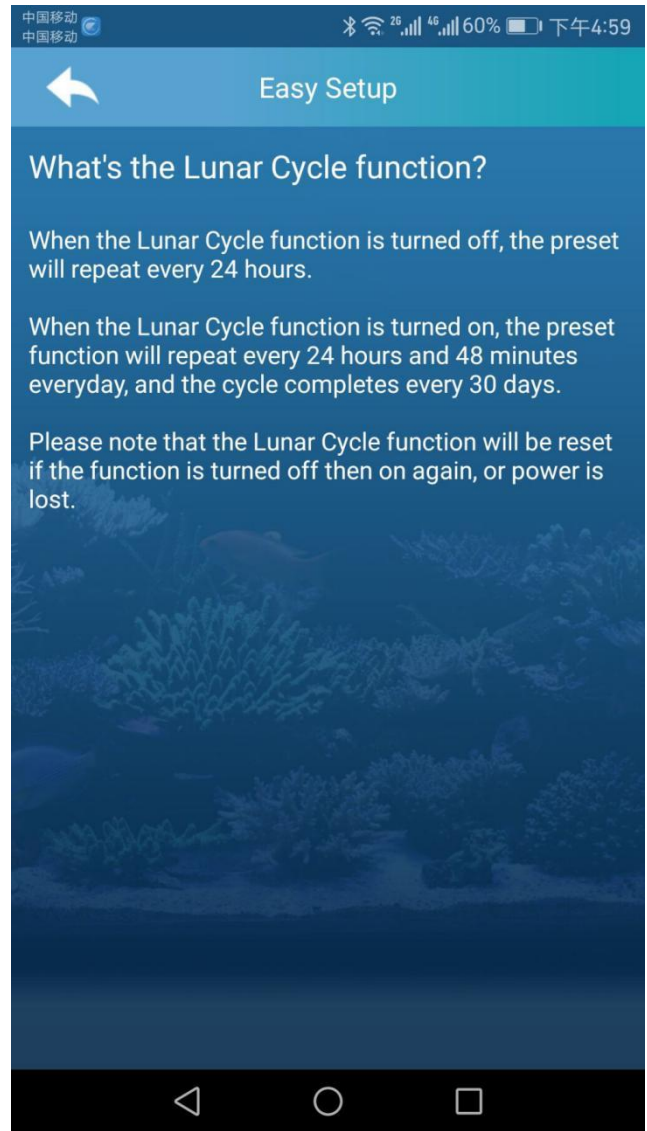
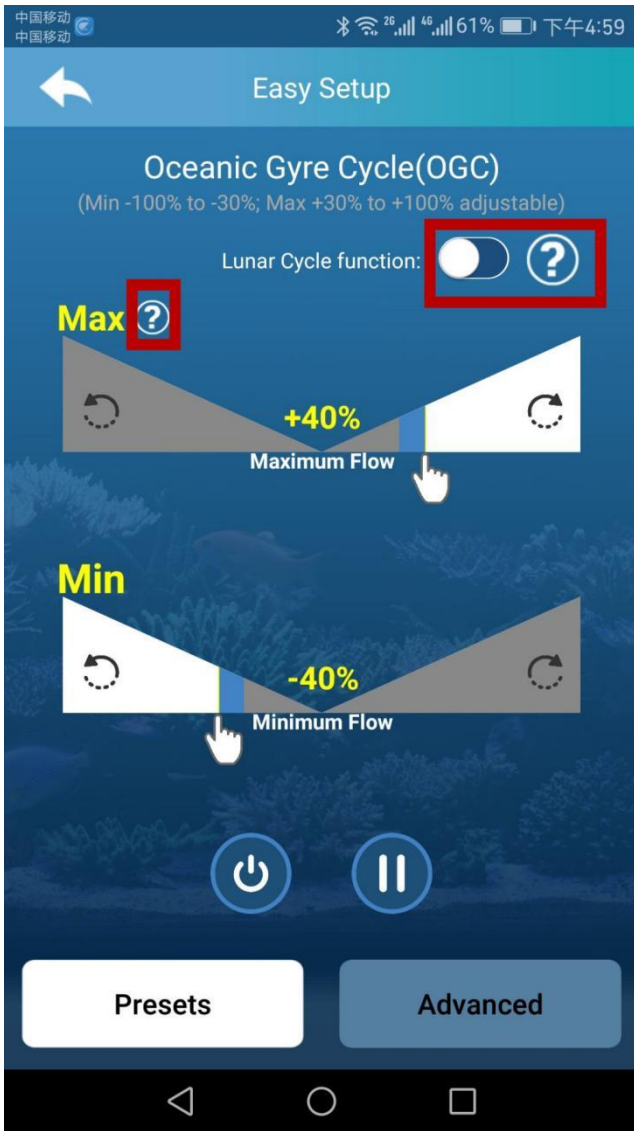


10. No matter on which preset, you could click the below buttons (1) to turn off Gyre controller, (2) To start the feed mode. While in feed mode, after the feed time is set, it will start counting down immediately.





11. For OGC(Oceanic Gyre Cycle) and LTC(Lunar Tidal Cycle) mode presets, there is Lunar Cycle Function for you to turn on/off. Basically the operation is same as other presets, you could also check the question marks for more details.



12. Thanks